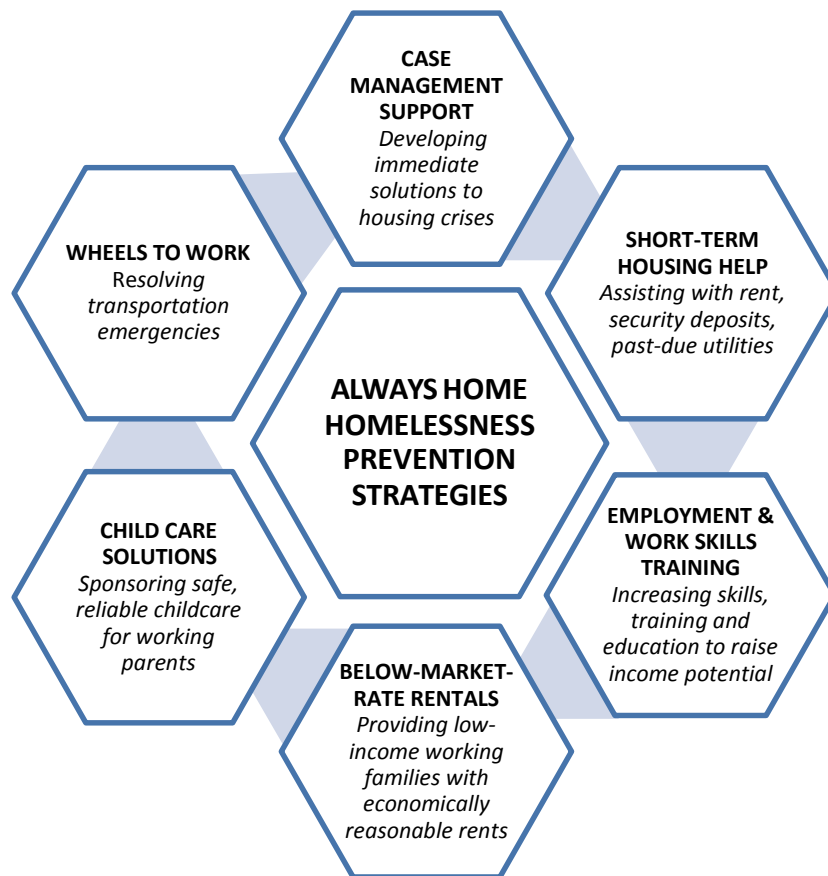


Year in Review FY 2019
July 1, 2018 to June 30, 2019

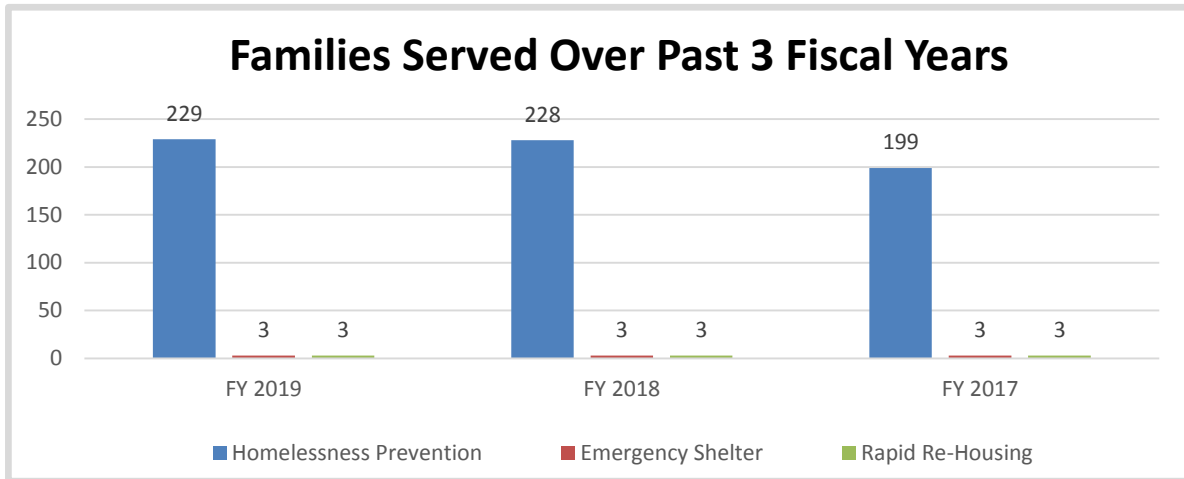
Always Home, Inc. was founded in 1998 to address the needs of Eastern Connecticut’s homeless and at-risk families. Our mission is **Preventing Family Homelessness**. Always Home is the region’s leading non-profit service provider dedicated exclusively to serving families with children. We strive to give parents the tools they need to overcome their housing crisis so that they can focus on the well-being of their children. Since our founding, Always Home has helped over 1,800 families achieve housing stability through pioneering homelessness prevention, emergency shelter and rapid re-housing services.

The typical Always Home client family is living at or near the Federal Poverty Level, struggling to afford Connecticut’s high rents on their low-wage jobs. These economically challenged families are so precariously housed that a relatively minor crisis (a costly car repair, a sick child, fewer work shifts) can threaten their housing stability to the point of homelessness.



The strategies above form the cornerstone of Always Home’s efforts to reduce the number of families falling into homelessness. All of these prevention efforts focus on eliminating the core barriers that contribute to job insecurity and ultimately, housing instability. Always Home’s goal is always to solve a family’s immediate housing emergency and to create a path to long-term housing stability.

Year-over-year data demonstrates that preventing an episode of homelessness costs less than sheltering and rapid re-housing, and results in better outcomes for families. In Fiscal Year 2019, Always Home provided support to 232 families who were on the doorstep of homelessness.



By continuing our focus on proven and effective prevention strategies, 229 of these families (98.7%) never had to enter the emergency shelter system. With Always Home’s help, these families instead found immediate solutions to their housing crisis. Only 3 families required temporary emergency shelter; all were rapidly re-housed within 15 days.

The 232 families helped in FY 2019 were comprised of a total of 717 family members, including 424 children. At Always Home, we see too many parents who experienced homelessness when they were young. By helping parents avoid homelessness today and create a more resilient future for their children, Always Home hopes to break this cycle of generational homelessness.

Always Home would not be able to provide these critical services without generous community support. We are deeply grateful to the many philanthropic individuals, businesses, granting foundations, state and municipal agencies, local Rotaries and non-profit clubs, the faith-based community and countless volunteers who together contributed over \$463,000 in support to Always Home in FY 2019.

FY 2019 Support

