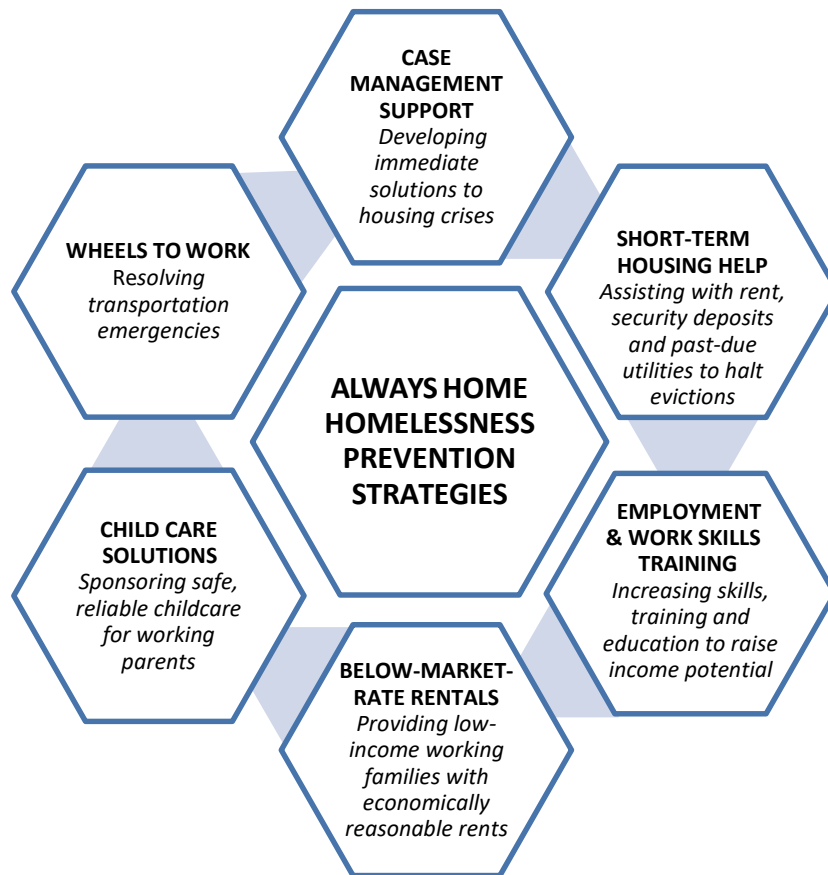


Year in Review FY 2020
July 1, 2019 to June 30, 2020

Always Home, Inc. was founded in 1998 to address the needs of Eastern Connecticut’s homeless and at-risk families. Our mission is **Preventing Family Homelessness**. Always Home is the region’s leading non-profit service provider dedicated exclusively to serving families with children. We strive to give parents the tools they need to overcome their housing crisis so that they can focus on the well-being of their children. Since our founding, Always Home has helped over 2,100 families achieve housing stability through pioneering homelessness prevention, emergency shelter and rapid re-housing services.

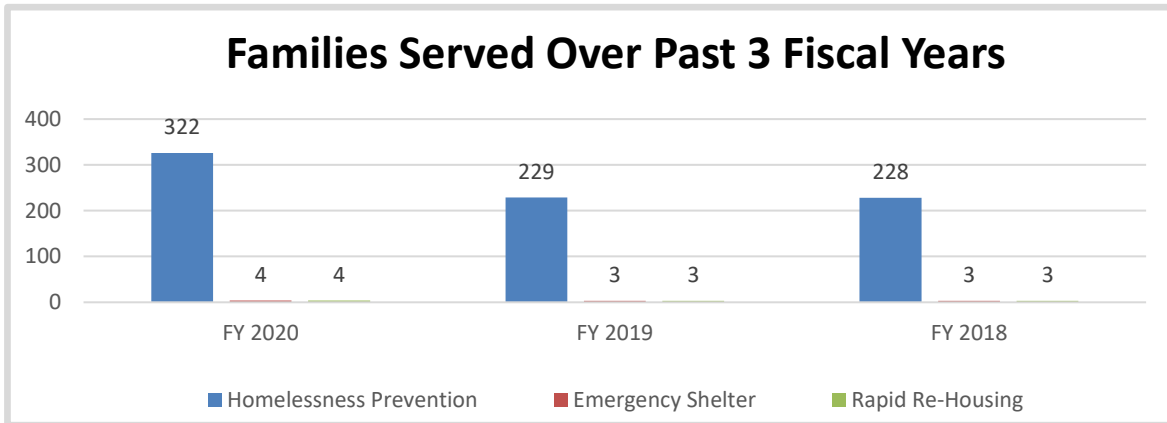
The typical Always Home client family is living at or near the Federal Poverty Level, struggling to afford Connecticut’s high rents on low-wage jobs. Most are spending 50% of their take-home pay on rent, leaving little for savings and other basic needs. COVID-related business closures and job losses have had a devastating impact on the housing stability of these low-income families. Unable to keep up with rent payments, an unprecedented number of Connecticut families face future eviction.



With your support, Always Home helps families resolve their housing crisis, avoid the trauma of emergency shelter and build better housing stability going forward. The strategies above form the cornerstone of our efforts to reduce the number of families falling into homelessness. Homelessness Prevention focuses on eliminating the core barriers that contribute to housing instability.

Year-over-year data demonstrates that preventing an episode of homelessness costs less than sheltering and rapid re-housing, and results in better outcomes for families.

In Fiscal Year 2020, Always Home provided support to 326 families who were on the doorstep of homelessness, a staggering 40% increase in the number of families served in FY 2019.



Note: Families sheltered are same families rehoused

By continuing our focus on proven and effective prevention strategies, 322 of these families (98.7%) never had to enter the emergency shelter system. With Always Home’s help, these families instead found immediate solutions to their housing crisis. Only 4 families required temporary emergency shelter; all were rapidly re-housed within 15 days.

The 326 families helped in FY 2020 were comprised of a total of 1,057 family member including 638 minor children. At Always Home, we see too many parents who experienced homelessness when they were young. By helping parents avoid homelessness today and create a more resilient future for their children, Always Home strives to break this cycle of generational homelessness.

Always Home would not be able to provide these critical services without generous community support. We are deeply grateful to the many philanthropic individuals, businesses, granting foundations, state and municipal agencies, local Rotaries and non-profit clubs, the faith-based community and countless volunteers who together contributed over \$550,000 in support of Always Home in FY 2020.

FY 2020 Support

